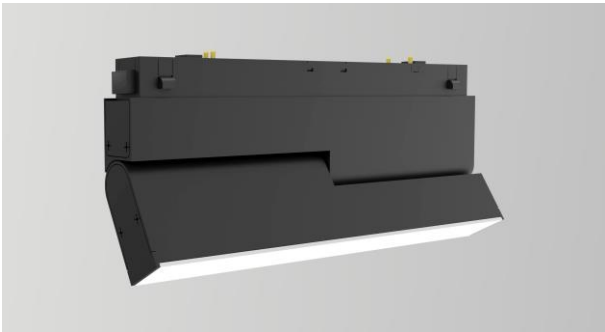


FLARE



SMD	48V	IP20	50,000h
DALI	I/10V	PUSH	120°

Technical Specifications:

Adjustable rectangular modular mini linear light for the linear system

Material: Made of extruded aluminum

Diffuser: PMMA opal diffuser

LED Type: SMD

CRI: ≥90

UGR: ≤19

Driver: Fits on the housing of the module

Easy connectivity of the adapter electrically and mechanically to the track

Dimming: Option to apply DALI / I-10 V / trailing edge dimmable driver

IP Rating: 20

Dimming Option:

DALI	D
I-10V	V
Push	P

Finish:

Black B

Dimensions:

Watt	W	H
9	195	20

KET-TL

	W	K	Lumen	L/W	CRI
FL0303.8.3	9	3000K	333	37	≥90
FL0303.8.4		4000K	366	40.6	≥90

