

FLARE



48V

IP20

Technical Specifications:

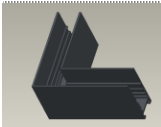
Surface mounted & suspended direct light track system

Material: The structure is made of extruded aluminum, with end caps on both sides

Can be used in different dimensions or as a continuous line

Fixing Type: Luminaire can be surface mounted or suspended with suspension kit

IP Rating: 20



L shape	Code
horizontal track	FL0301-2
100*100	



L shape	vertical	
track	100*100	FL0301-3

Frame colors:

White	W
Black	B

Dimensions:

Meter	L	W*H
1	1000	25*55.1
2	2000	25*55.1

	Length
FL0300.1	1 meter
FL0300.2	2 meter

